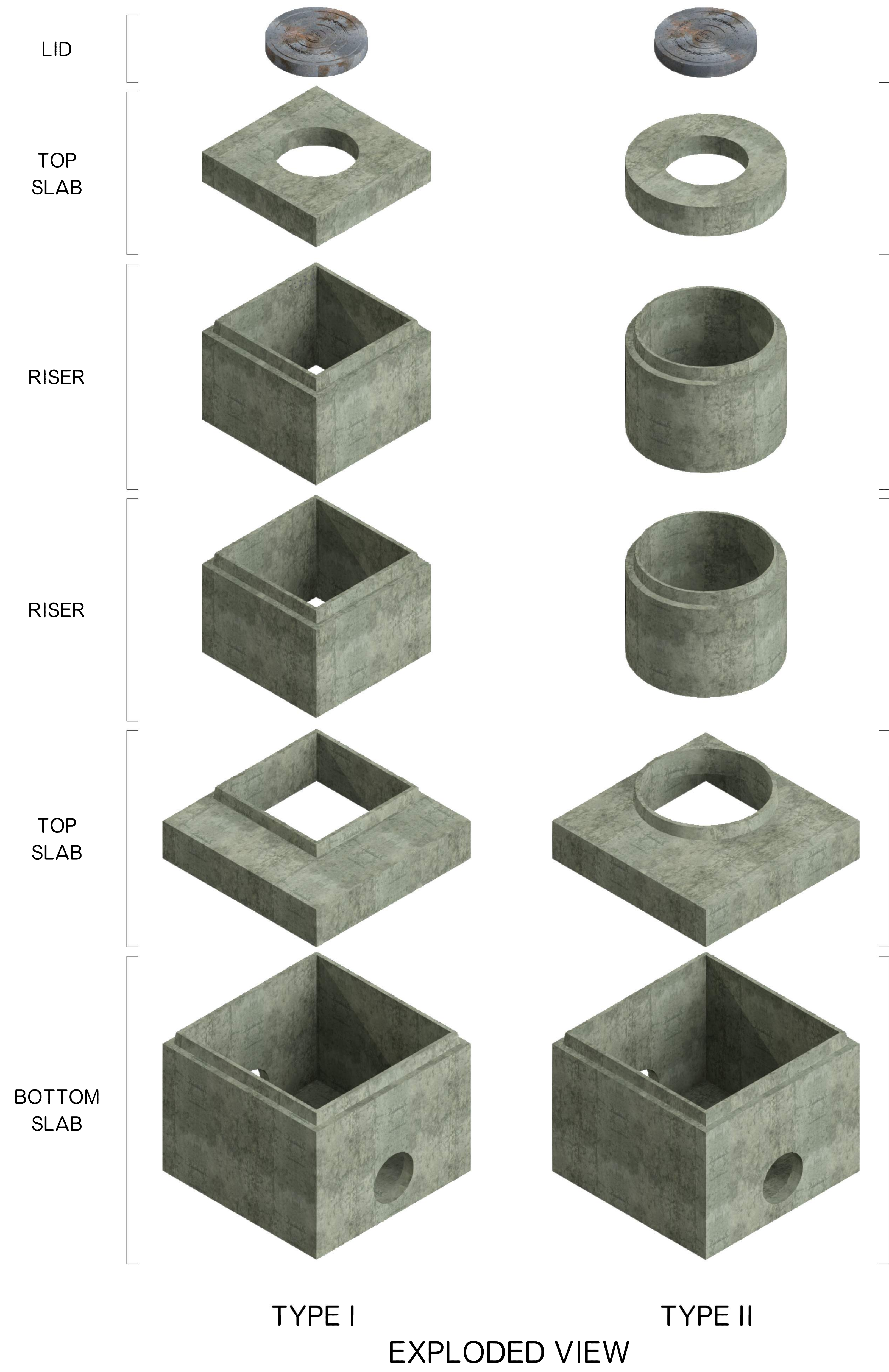


TYPICAL JUNCTION BOX

NANCE PRECAST CONCRETE PRODUCTS

5601 WASHINGTON AVE. N.E., PIEDMONT, OK 73078

PHONE 405-373-1800 FAX 405-373-1803



LID

TOP SLAB

RISER

RISER

TOP SLAB

BOTTOM SLAB

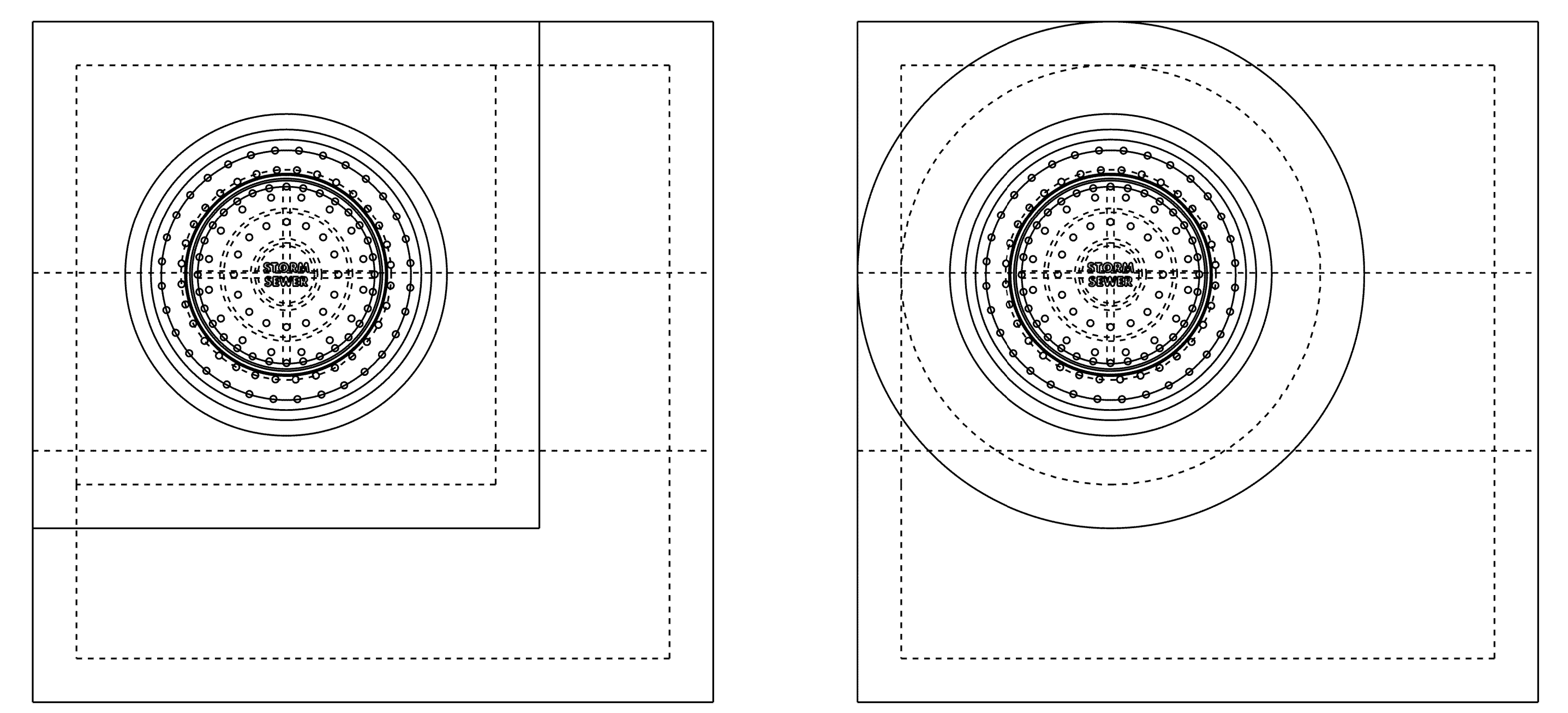
| | | | |
|----------------|-----|-----|-----|
| DIAMETER | 48" | 60" | 72" |
| BASE HEIGHT | 12" | 36" | 36" |
| BOTTOM SLAB | 6" | 8" | 8" |
| SLAB THICKNESS | 6" | 8" | 8" |
| WALL THICKNESS | 5" | 6" | 7" |

FEATURES:

- CONCRETE HAS DESIGN STRENGTH OF A MIN. OF 4,000 PSI AT 28 DAYS.
- TOLERANCE IS PER MANUFACTURER'S STANDARD.

NOTES:

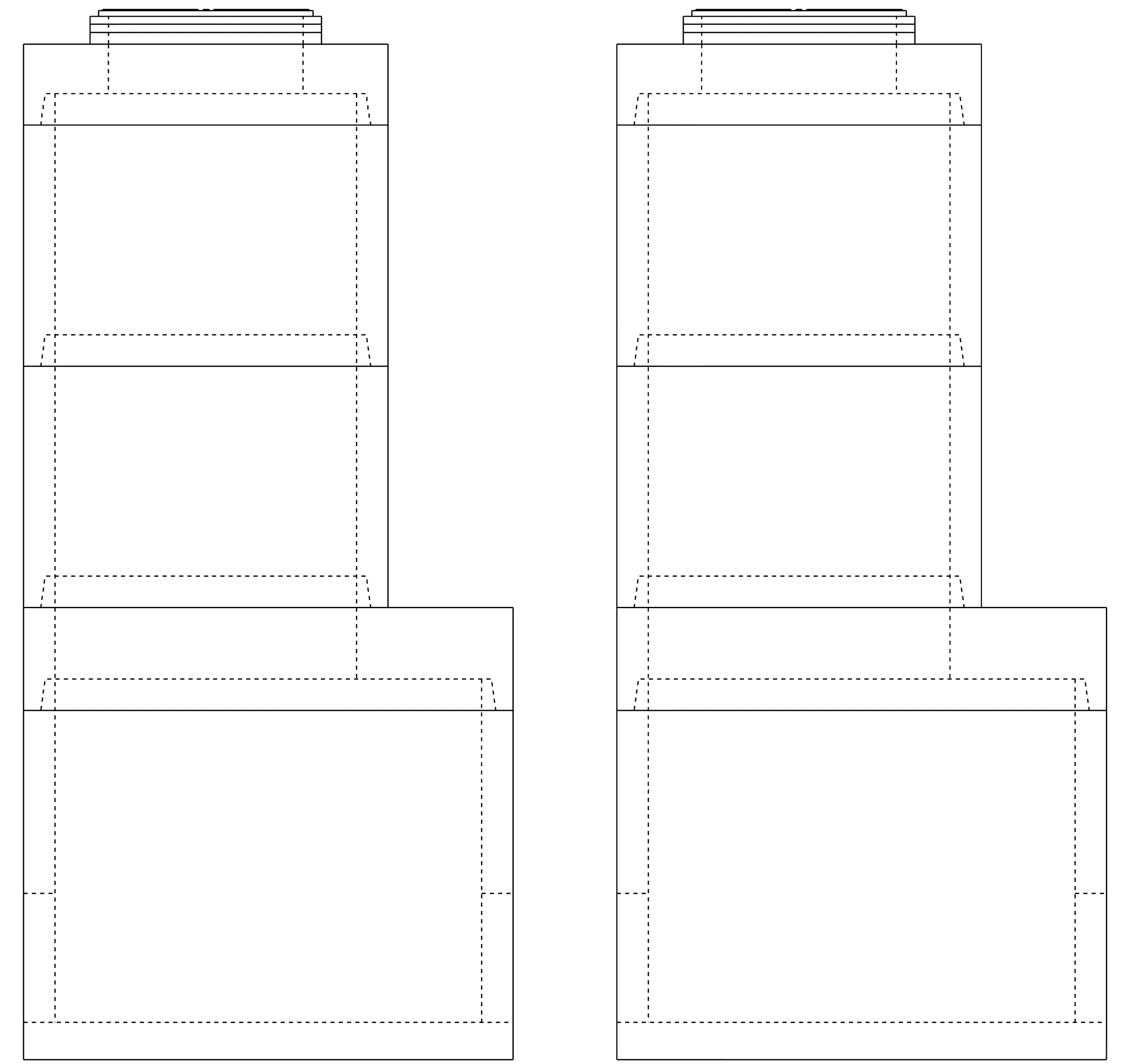
- ALSO AVAILABLE WITH 8" AND 12" LID, WALLS, AND FLOOR.
- ALSO AVAILABLE WITH A VARIETY OF ALUMINUM AND STEEL HATCHES.
- ALSO AVAILABLE WITH RISER SECTIONS FOR EXTRA HEIGHT.
- CUSTOM BOXES ALSO AVAILABLE.



TYPE I

TYPE II

PLAN



TYPE I

TYPE II

ELEVATION

PROPRIETARY AND CONFIDENTIAL

THE INFORMATION CONTAINED IN THIS DRAWING IS THE SOLE PROPERTY OF NANCE PRECAST CONCRETE PRODUCTS.

ANY REPRODUCTION IN PART OR AS A WHOLE WITHOUT THE WRITTEN PERMISSION OF NANCE PRECAST CONCRETE PRODUCTS IS PROHIBITED.

